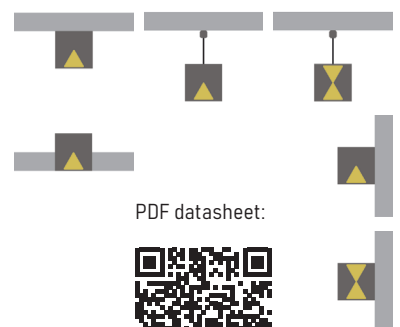


# PROLINE 45



Linear luminaire made of extruded aluminum profile. High luminous efficacy optics. Low glare UGR<19 lenses or selection of diffusers. Direct or direct/indirect lighting type. Top quality SMD LED modules with colour consistency MacAdams  $\leq 3$ , extensive portfolio of lumen ranges, CCTs and spectra. Variety of drivers: standard EVG on/off, DALI and wireless controlled as MasterConnect or Casambi on request. Built-in or remote, wireless occupancy & daylight sensor available to allow significant energy savings and wireless connectivity. Mounting type: surface mounted, wall mounted, suspended, trimless recessed (custom made ceiling brackets on request). Standard colour RAL 9003S, any other colour from basic RAL range available at no extra cost. Variety of beam angles, diffusers, lumen outputs and drivers allows to use this luminaire in different types of lighting projects. Wide selection of standard lengths: single linear luminaires (type S) or system luminaires (type SE/M) and system connectors (L,T,X type). Many lengths of lighting lines, square and rectangular shapes can be created by using our system pieces. End caps for single (S type) profiles included. All accessories such as end caps, linear connectors, quick connectors, suspension wires or power cables for system profiles (SE/M type) or TR mounting brackets (for TR version) should be ordered separately. Bespoke lengths and shapes of lighting lines available on request. Luminous flux & Luminaire Power tolerance up to 10%. System power consumption depends on components used. Luminous efficacy depends on type of LED's, electronics, optics and diffuser. The most up to date technical parameters can be found on our website and in database of LDT files.

Lighting direction:



PDF datasheet:



# PROLINE 45

<b>Mounting:</b>	Surface mounted, suspended, wall mounted, trimless recessed
<b>Body material:</b>	Aluminium profile
<b>Colour:</b>	Standard white RAL 9003M, other RAL colours on request
<b>Lumen output:</b>	Standard up to 4000 lm/meter, any other on request
<b>LED module:</b>	Signify (Philips), Tridonic or equivalent SMD LED modules
<b>Colour temperature:</b>	3000/4000K/2700-6500K TW other on request
<b>Colour Rendering:</b>	CRI>80 in standard, other on request
<b>Driver:</b>	EVG on-off/DALI/TW DT8/MC ( MasterConnect )/Casambi, other on request
<b>Wireless control:</b>	Philips MasterConnect / Casambi, other on request
<b>Daylight/Occupancy sensor:</b>	Built-in XC sensor or wireless MCS sensor
<b>Emergency unit:</b>	On request
<b>Operating temperature range:</b>	0°C ... +35°C
<b>IP Class:</b>	IP20 in standard
<b>Power:</b>	220-240V 50/60Hz
<b>Lighting direction:</b>	Direct, direct / indirect lighting
<b>Light distribution:</b>	Symmetric / Asymmetric
<b>Diffusor:</b>	OP white acrylic / MP19H microprismatic UGR<19
<b>Optics:</b>	White reflector / UGR<19 diffused lenses PREMIUM 1 or PREMIUM 2 type
<b>Lens shade:</b>	BM black matt, WH white matt
<b>Beam angle:</b>	35°/50°/80°/ASY - all types available in our LDT file database
<b>Warranty:</b>	5 Years standard warranty

- PROLINE 45 S DN** single profile, ceiling mounted or suspended, light down, OP or MP19H diffusor
- PROLINE 45 S UP\_DN** single profile, suspended, light up & down, OP or MP19H diffusor
- PROLINE 45 SE DN** system profile START/END type, ceiling mounted or suspended, light down, OP or MP19H diffusor
- PROLINE 45 SE UP\_DN** system profile START/END type, suspended, light up & down, OP or MP19H diffusor
- PROLINE 45 M DN** system profile MIDDLE type, ceiling mounted or suspended, light down, OP or MP19H diffusor
- PROLINE 45 M UP\_DN** system profile MIDDLE type, suspended, light up & down, OP or MP19H diffusor
- PROLINE 45 L / T / X DN** system profile L/T/X type, ceiling mounted or suspended, light down, OP or MP19H diffusor
- PROLINE 45 L / T / X UP\_DN** system profile L/T/X type, suspended, light up & down, OP or MP19H diffusor
- PROLINE 45 S DN WL** single profile, wall mounted, light down, OP or MP19H diffusor
- PROLINE 45 S UP\_DN WL** single profile, wall mounted, light up & down, OP or MP19H diffusor
- PROLINE 45 PREMIUM 1 S DN** single profile, ceiling mounted or suspended, light down, PREMIUM 1 UGR<19 type lens.
- PROLINE 45 PREMIUM 1 S UP\_DN** single profile, suspended, light up & down, PREMIUM 1 UGR<19 type lens.
- PROLINE 45 PREMIUM 2 S DN** single profile, ceiling mounted or suspended, light down, PREMIUM 2 UGR<19 type lens.
- PROLINE 45 PREMIUM 2 S UP\_DN** single profile, suspended, light up & down, PREMIUM 2 UGR<19 type lens.
- PROLINE 45 TR S DN** single profile, trimless recessed, light down, OP or MP19H diffusor
- PROLINE 45 TR PREMIUM 1 S DN** single profile, trimless recessed, light down, PREMIUM 1 UGR<19 type lens.
- PROLINE 45 TR PREMIUM 2 S DN** single profile, trimless recessed, light down, PREMIUM 2 UGR<19 type lens.

All current index numbers, lumen outputs, power consumption and many other technical information are available in our 2024 pricelist. Details on wireless lighting control systems on page number 896.



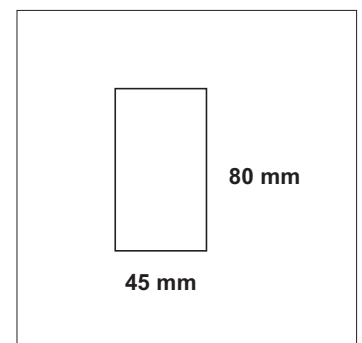
XCS wireless switch



MCS wireless daylight&occ sensor



XC daylight&occ sensor



Basic dimensions

# PROLINE 45



OP white acrylic diffuser



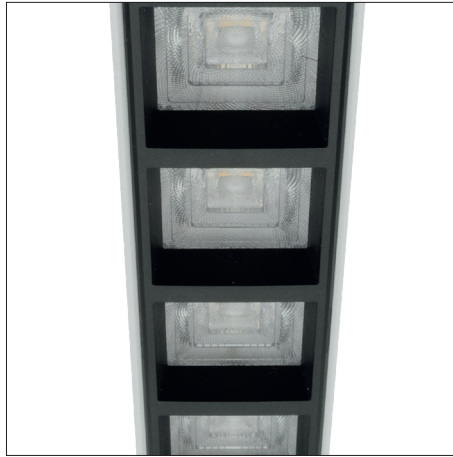
MP19H microprismatic diffuser



Trimless mounting available for all types



PREMIUM1 UGR<19 lens



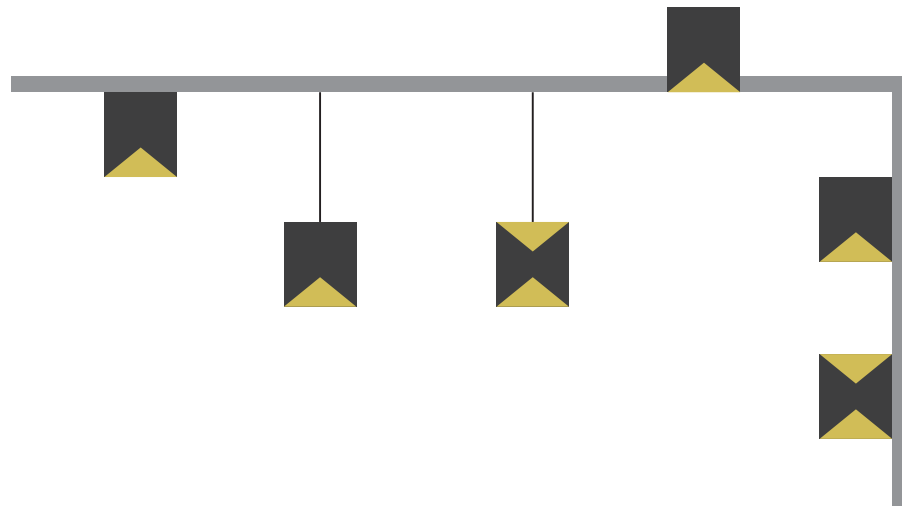
PREMIUM2 UGR<19 lens



BM / WM lens shade

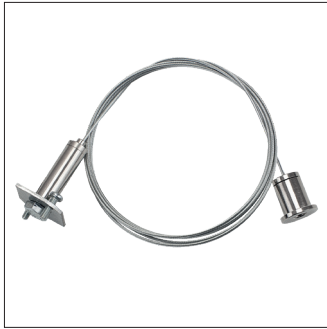
All PROLINE type luminaires can be made to measure as single lighting lines or lighting systems in different sizes and shapes. Please contact our sales team for details.

## Mounting types:



# PROLINE 45

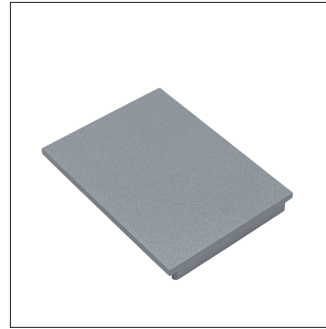
## Accessories:



Suspension for PROLINE 45 - 1,5 m long steel wire (1 piece)



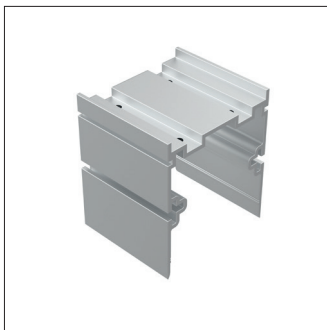
3 or 5 core transparent power feed, 1,5 m including ceiling base



End cap for PROLINE 45 (1 piece)



TR REC BOX 45 - steel box for plasterboard ceiling trimless mounting



Linear connector for PROLINE 45



3 pole quick connectors (Male + Female)



5 pole quick connectors (Male + Female)

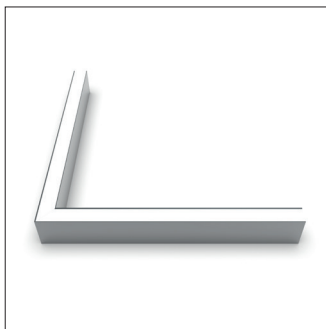


TR ( trimless ) mounting bracket

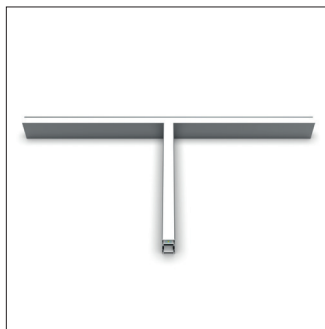
All accessories for system profiles and couplers ( Type SE / M / L / T / X ) such as end caps, linear connectors, quick connectors, suspension wires or power cables should be ordered separately.

Accessories for single profiles ( Type S ) such as suspension wires or power cables should be ordered separately. End caps for single profiles are included in product's index numbers.

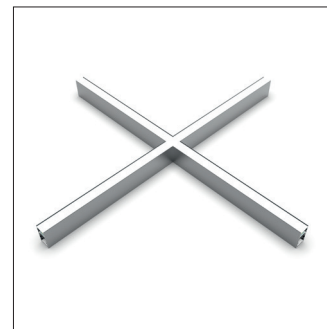
## Couplers:



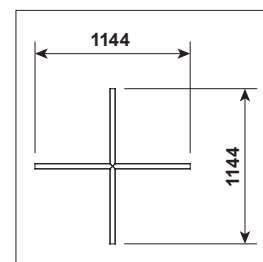
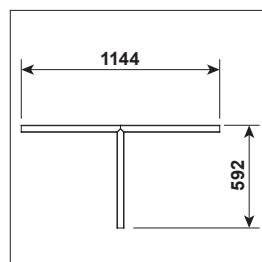
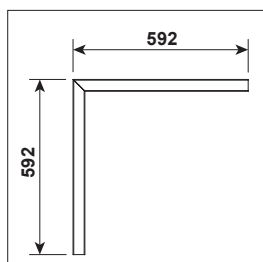
PROLINE 45 system coupler type L DN or UP\_DN



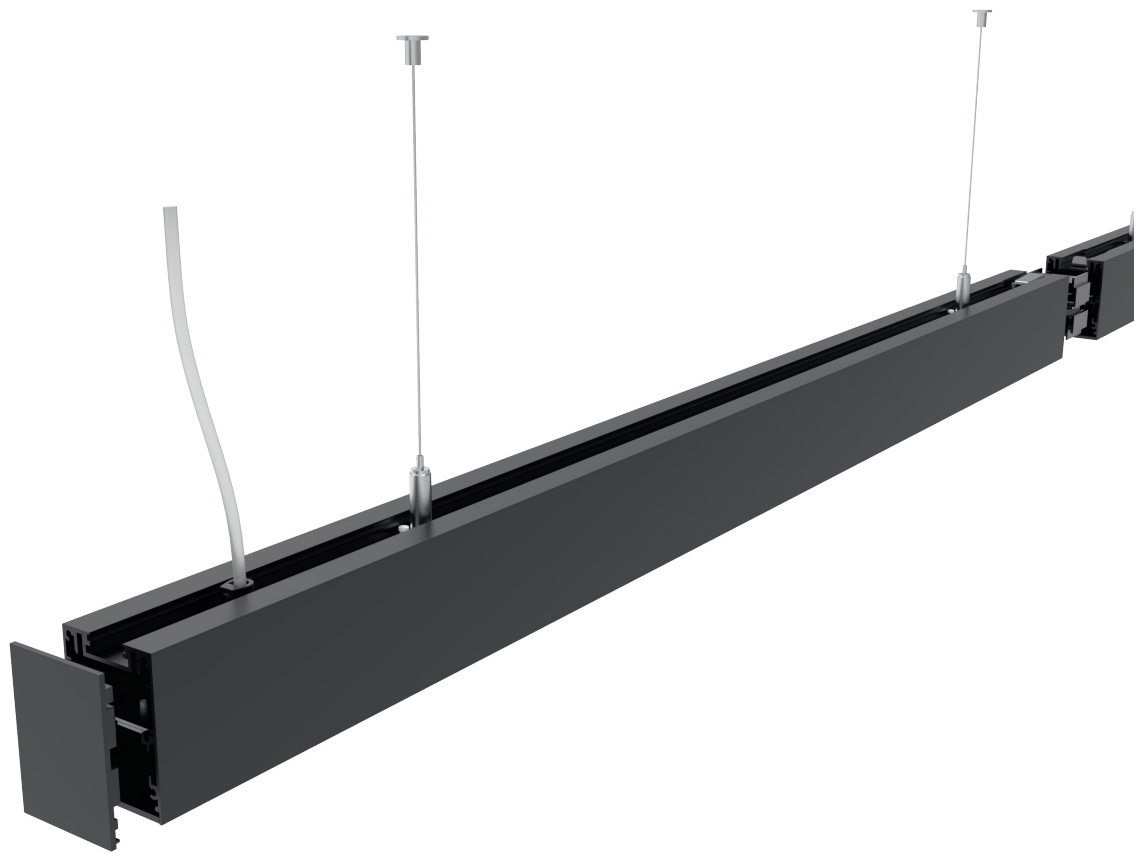
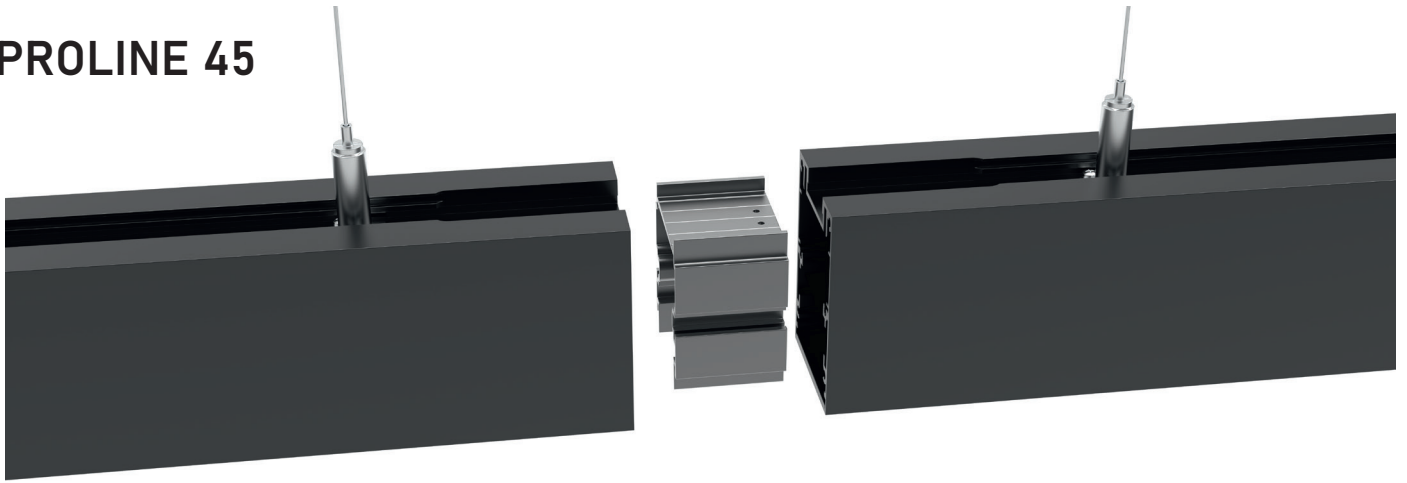
PROLINE 45 system coupler type T DN or UP\_DN



PROLINE 45 system coupler type X DN or UP\_DN



# PROLINE 45



## Technical information:

- PREMIUM1** – UGR<19 Dark Light solution, lens optics with shades – great for premium office lighting.
- PREMIUM2** – UGR<19 Bright Light solution, lens optics with shades and partly visible optical surface
- OP** – White acrylic diffuser with over 85% of light transmission to provide high class lighting efficacy.
- MP19H** – UGR<19 diffuser solution with extra layer of white acrylic film that provide comfortable lighting from any angle.
- XC** – Built-in daylight&occupancy sensor available with all types of profile luminaires.
- MCS** – Wireless daylight&occupancy sensor available with all types of profile luminaires.
- XCS** – Wireless power switch with dimming and scene setup option.
- TR** – Trimless mounting bracket for plasterboard ceiling type – can be custom made depending on ceiling type used.
- TR REC BOX** – Trimless mounting box for plasterboard ceiling type – can be custom made depending on ceiling type used.



Energy saving MasterConnect wireless lighting control system with daylight and movement detection technology on request.



# PROLINE 45

## Profile types:

### Single profile versions:

**TYPE S DN** single profile, light down



#### **MOUNTING OPTIONS:**

- light down, surface mounted
- light down, suspended
- light down, wall mounted
- light down, trimless recessed

**TYPE S UP\_DN** single profile light up/down



#### **MOUNTING OPTIONS:**

- light up & down, suspended
- light up & down, wall mounted

### System profile versions:

**TYPE SE DN** system profile, start/end section, light down



#### **MOUNTING OPTIONS:**

- light down, surface mounted
- light down, suspended
- light down, trimless recessed

**TYPE SE UP\_DN** system profile, start/end section, light up & down



#### **MOUNTING OPTIONS:**

- light up & down, suspended

**TYPE M DN** system profile, middle section, light down



#### **MOUNTING OPTIONS:**

- light down, surface mounted
- light down, suspended
- light down, trimless recessed

**TYPE M UP\_DN** system profile, middle section, light up & down

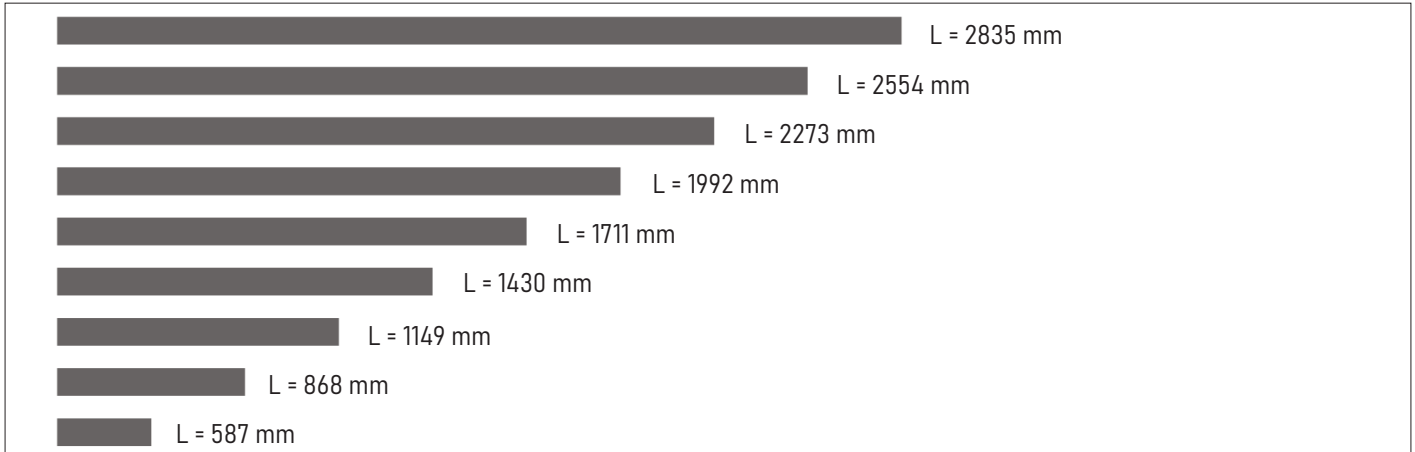


#### **MOUNTING OPTIONS:**

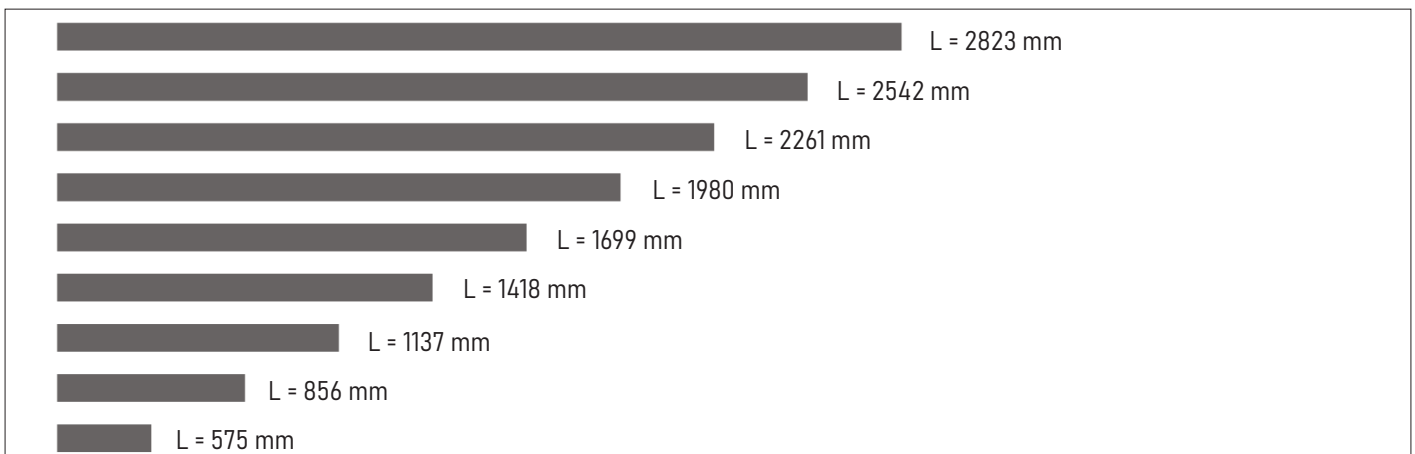
- light up & down, suspended

# PROLINE 45

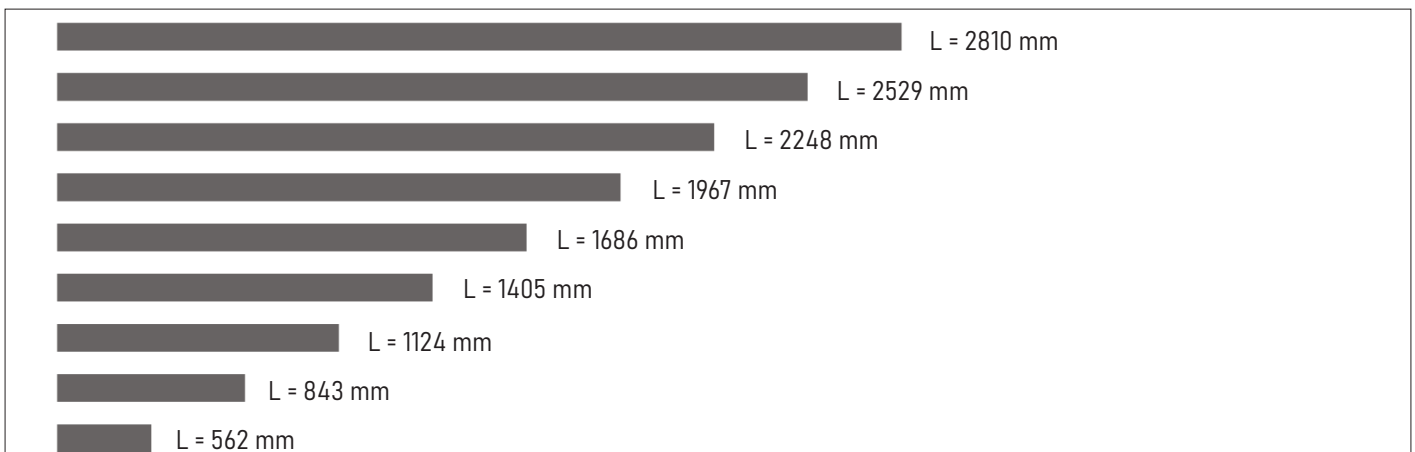
## Single profile, standard lengths including end caps TYPE S DN and TYPE S UP\_DN:



## System profile, start/end section lengths including one end cap TYPE SE DN and TYPE SE UP\_DN:



## System profile, middle section lengths TYPE M DN and TYPE M UP\_DN:



# PROLINE 45

## DESCRIPTION OF PROLINE CONCEPT:

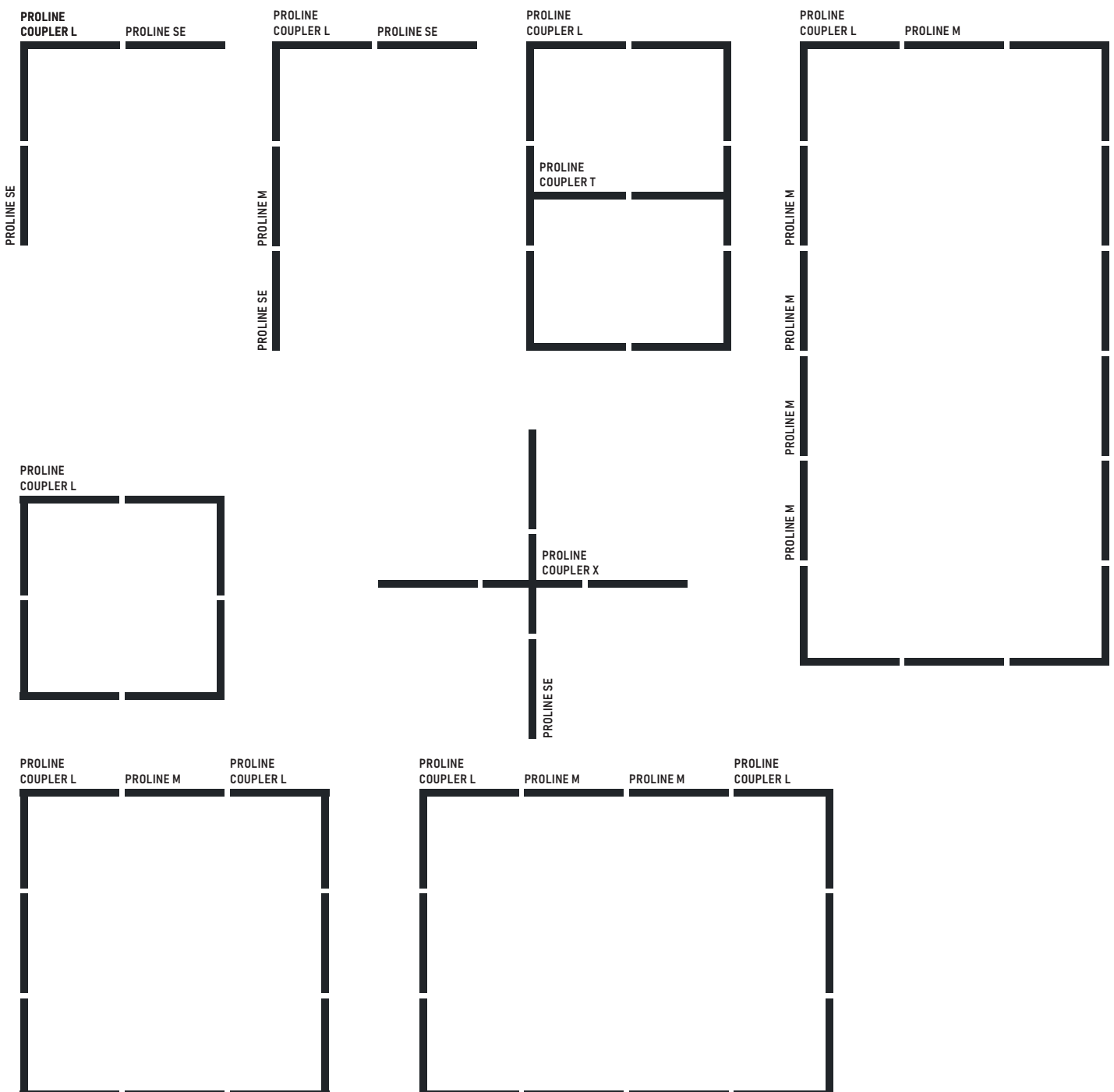
- PROLINE S DN - single luminaires with light down (can't be connected into lighting systems)
- PROLINE S UP/DN - single luminaires with light up/down (can't be connected into lighting systems)
- PROLINE SE DN - system luminaire with light down (must be used at the beginning and at the end of each linear lighting system)
- PROLINE SE UP/DN - system luminaire with light up/down (must be used at the beginning and at the end of each linear lighting system)
- PROLINE M DN - system luminaire with light down (middle section to be used in between SE type profiles). Any length of lighting system can be created by using different lengths and numbers of M-type profiles between two SE-type profiles.
- PROLINE M UP/DN - system luminaire with light up/down (middle section to be used in between SE-type profiles). Any length of lighting system can be created by using different lengths and numbers of M-type profiles between two SE-type profiles.

PROLINE S

PROLINE SE      PROLINE SE

PROLINE SE      PROLINE M      PROLINE SE

PROLINE SE      PROLINE M      PROLINE M      PROLINE M      PROLINE SE





# PROLINE 45

## PROLINE CONCEPT - HOW TO BUILD LIGHTING SYSTEMS:

- Always start your linear lighting system with SE type of PROFILE
- Use required number of M type PROFILES to extend length of your lighting system
- Always finish your linear lighting system with SE type of PROFILE
- COUPLERS T, X and L type can be used to modify your lighting system design
- Each end of T, X or L COUPLER must be connected further to M or SE type of PROFILE.
- End of COUPLER can't be closed with end cap directly.
- Remember - PROLINE M can't exist on its own without additional SE type of PROFILES.
- Available length of PROLINE elements (SE/M can be found on corresponding pages in our catalogue)
- All accessories such as end caps, linear connectors, quick connectors, suspension wires or power cables should be ordered separately for all types of system profiles: Type SE / M / L / X / T.
- Accessories such as suspension wires or power cables should be ordered separately for all types of single profiles: Type S (end caps are included).

